

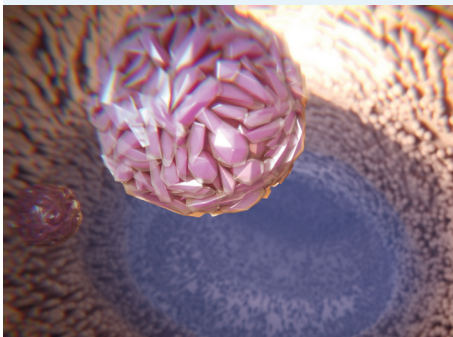
Growth and Intestinal Health for Post-Weaned Swine

NeoPrime® is a patented, mineral-based feed additive that promotes intestinal health in swine and counteracts the fallback effects of piglet weaning on intestinal health and growth. The synergistic formula of NeoPrime achieves these effects by reducing the level of pathogenic challenge in the intestine, energizing intestinal epithelial cells and safely stimulating intestinal immunity

NEOPRIME HAS THREE MODES OF ACTIONS

1

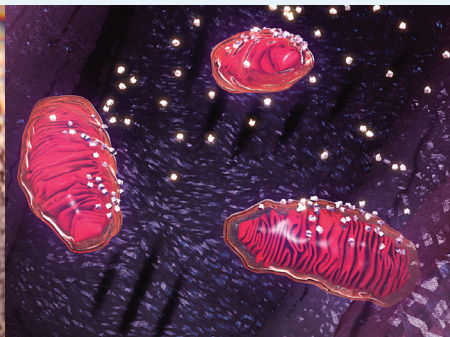
PROTECTS THE INTESTINAL ENVIRONMENT



Binds pathogens and harmful biotoxins in the intestine to help prevent disease and performance loss

2

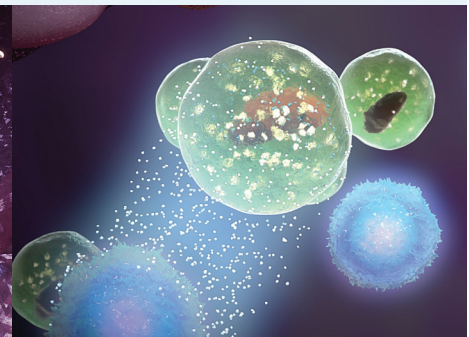
ENERGIZES INTESTINAL EPITHELIAL CELLS



Acts as an energy source for enterocytes which are essential for nutrient absorption

3

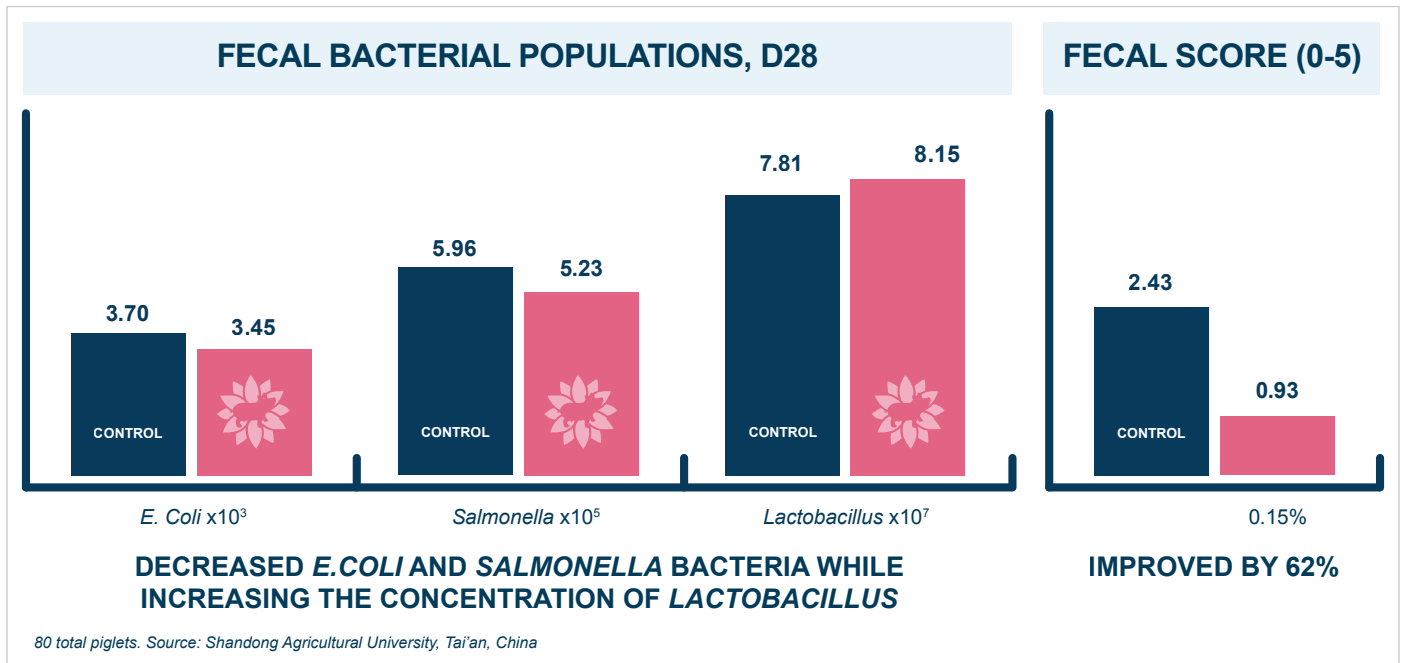
STIMULATES INTESTINAL IMMUNITY, SAFELY



Presents bound pathogens to the immune system to safely stimulate intestinal immunity

NEOPRIME® SUPPORTS INTESTINAL HEALTH

NeoPrime improved the fecal score of piglets by binding harmful bacteria and positively modifying the intestinal environment.



IMPROVE FEED EFFICIENCY WITH NEOPRIME

A primed and healthy intestinal environment is critical for efficient feed use and economical production. NeoPrime provides an energy source for rapidly growing enterocytes, to better absorb nutrients and improve feed efficiency.

| Study | NeoPrime Dose | FEED EFFICIENCY | | |
|-------|---------------|-----------------|----------|-------------|
| | | Control | NeoPrime | Improvement |
| 1 | 0.1% | 1.53 | 1.46 | 7 points |
| | 0.3% | | 1.47 | 6 points |
| 2 | 0.15% | 1.44 | 1.36 | 8 points |
| 3 | 0.15% | 1.61 | 1.49 | 12 points |

*Study Details:
Study 1: Purdue University, West Lafayette, IN; 21-day-old piglets (144 total) on study for 35 days.
Study 2: Commercial Farm A, Jalisco, Mexico; 25-day-old piglets (120 total) on study for 25 days.
Study 3: Commercial Farm B, Jalisco, Mexico; 36-day-old piglets (327 total) on study for 34 days.*



Use alone or with other Amlan products in synergistic combinations for optimal health and performance results.

